

VDOT LOCATION AND DESIGN DIVISION ORGANIZATIONAL CHART September 15, 2021

ERL = 91
Strength = 84
Vacant = 7

Susan Keen, P.E.
39055-22954
State Location & Design Engineer
Division Administrator

Emmett Heltzel, P.E.
39055-22989
Director
(Engineering Management Services)

Vernon Heishman, P.E.
39054-04354
Assistant State L&D Engineer
(Project Delivery)

- Salem District
- Bristol District
- Staunton District

Terry Knouse, P.E.
39054-00267
Assistant State L&D Engineer
(Program Delivery Support)
NOVA, Salem, Bristol, Staunton & Culpeper

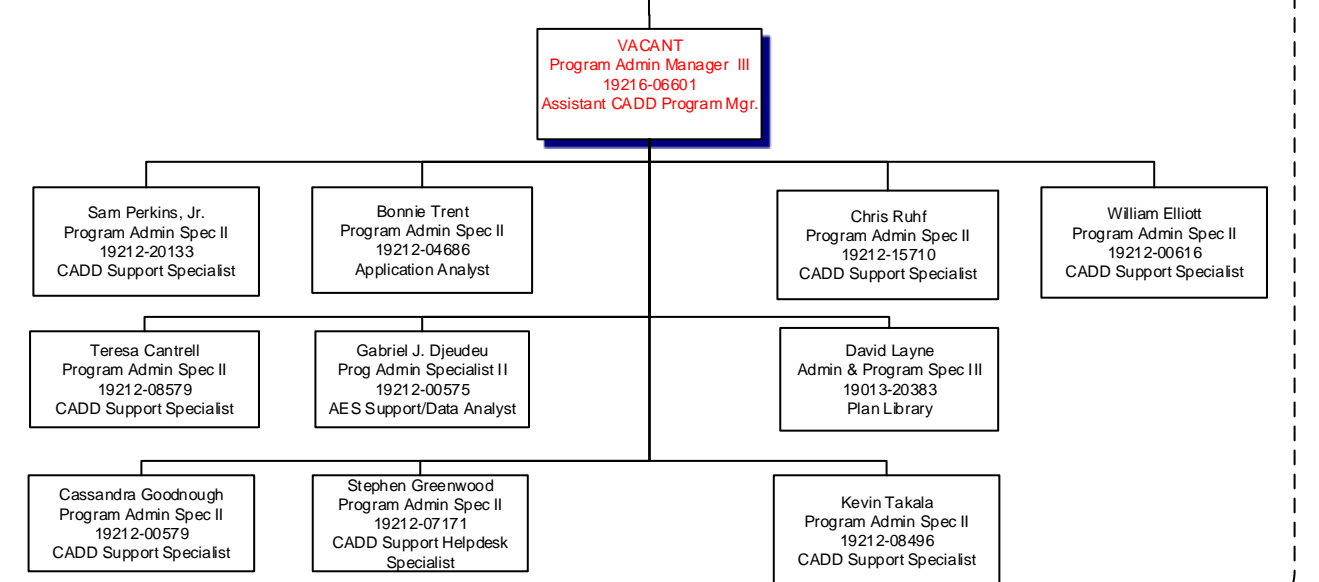
Richard Worssam, P.E.
39054-05765
Assistant State L&D Engineer
(Program Delivery Support)
Hampton Roads, Fredericksburg, Lynchburg & Richmond

Chris Swanson, P.E.
39054-00626
Assistant State MS4/SWM Engineer

- Northern Virginia District (NOVA)
- Culpeper District
- Fredericksburg

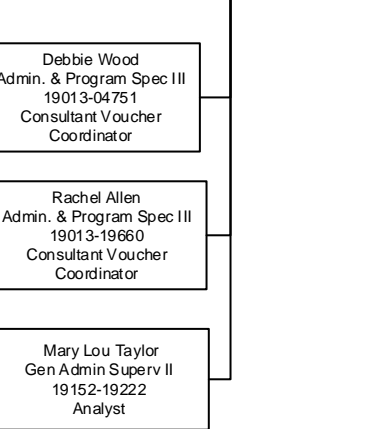
- Hampton Roads
- Lynchburg
- Richmond

Scott Speight
Program Administration Manager III
19216-20038
Statewide Services CADD Program Mgr.



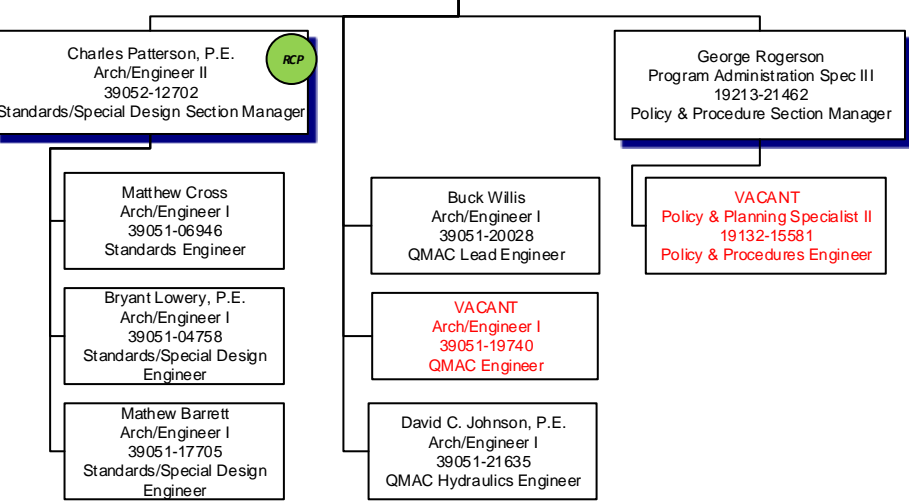
STATEWIDE SERVICES - CADD Support, Plan Coordination & Plan Library

Meredith Harris
General Admin Manager II
19224-20021
Division Business Manager



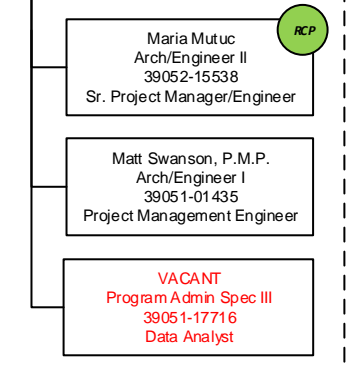
Business Administration

Joe Kosciuszki, Jr., P.E.
39054-04719
State Geometric Design Engineer



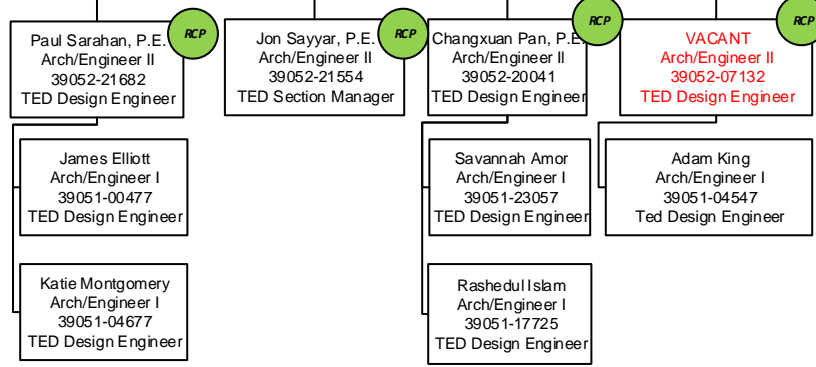
Engineering Policies Standards & Design

Rob Tieman, P.E.
39054-22938
Project Management Office Director



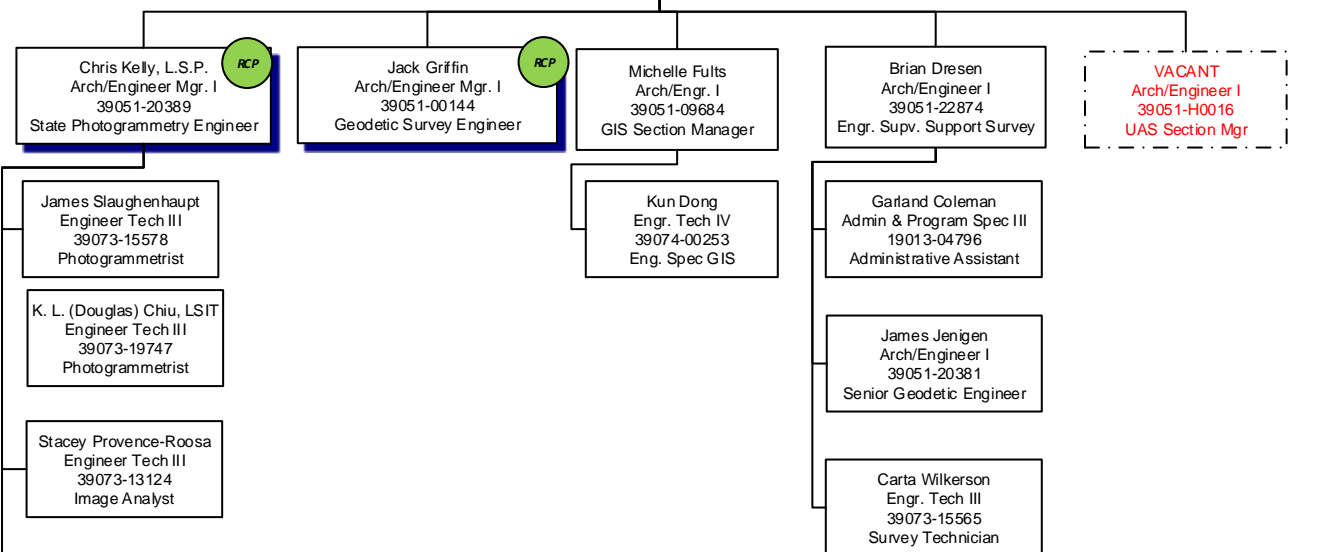
Preliminary Engineering Program Development

Federico Gontaruk
Architect/Engineer Manager II
39054-08507
State Traffic Design Program Manager



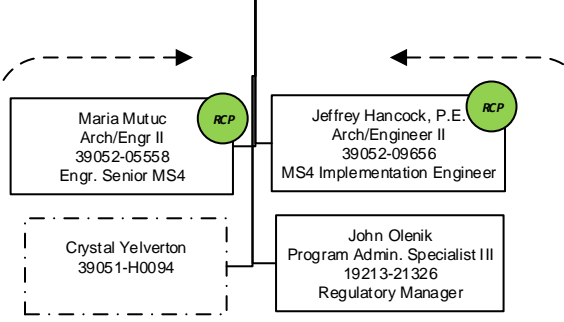
Traffic Design Section

Reed Adams, L.S.
39054-15503
Geospatial Project Manager



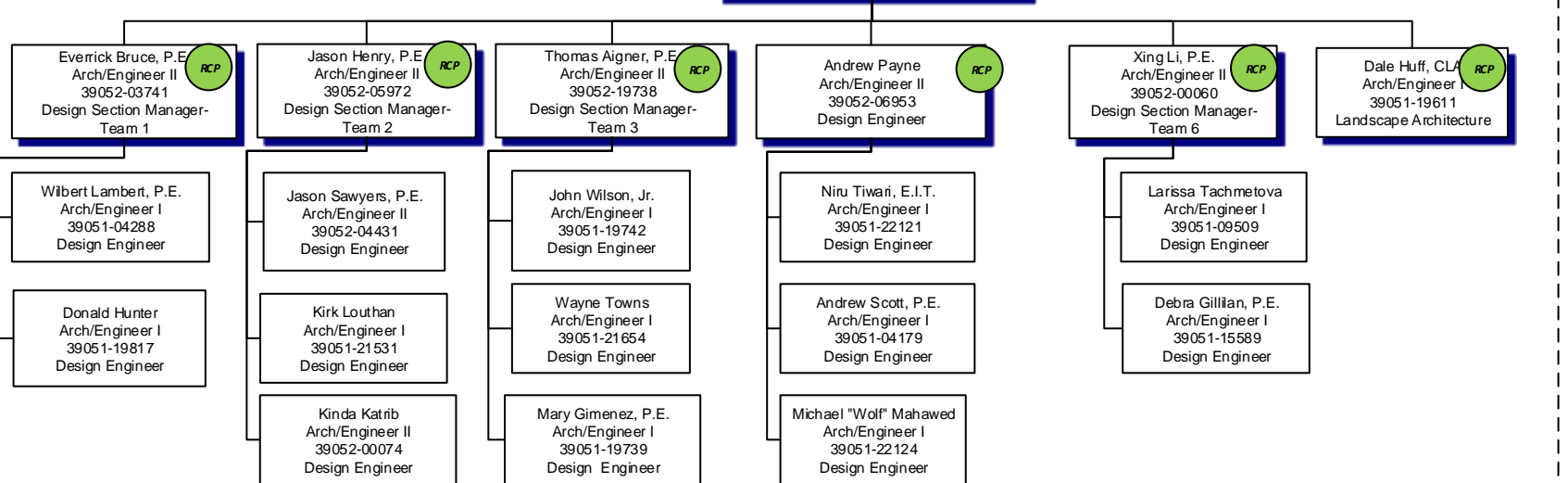
GEOSPATIAL

Alex Forsté, P.E.
39054-09812
Arch/Engineer II Manager
MS4/Resiliency program Mgr.



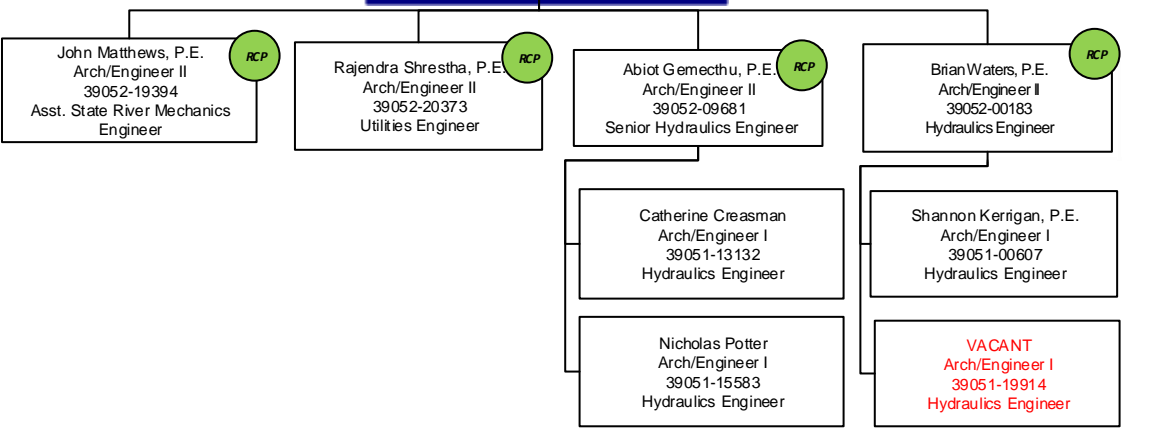
MS-4/SWM

Larkford Harkins, P.E.
39054-21314
Roadway Design Program Manager



Design and Special Projects Section

Victoria "Tory" Bains, P.E.
39054-00645
State Hydraulics & Utilities Engineer Manager



Hydraulics & Utilities Section

LEGEND

- VACANT Arch/Engineer
- Associate Engineer
- Responsible Charge Position
- Division Administration
- Program Manager