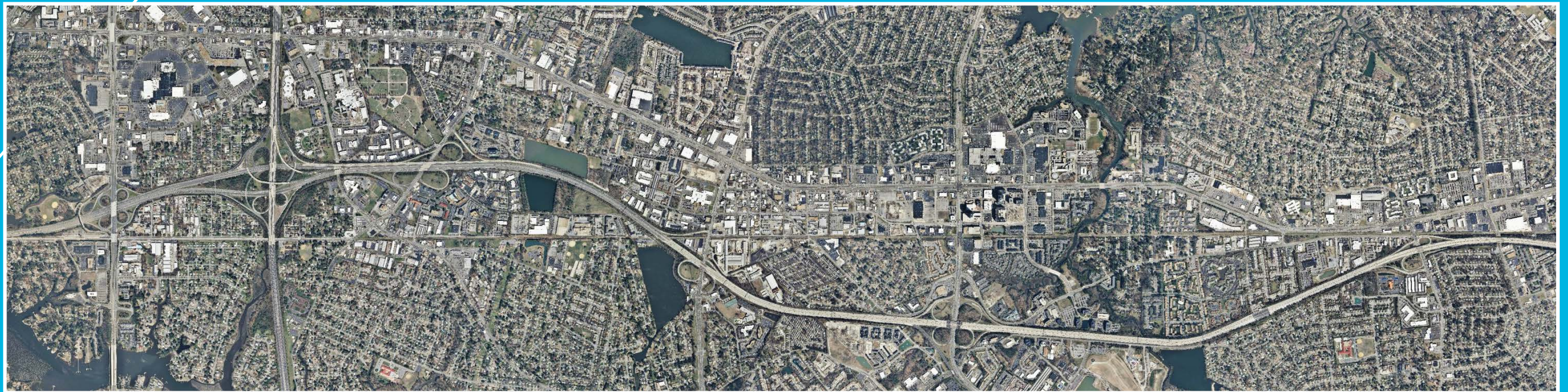


I-264 Corridor Evaluation Study

FINAL REPORT



Date

July 2016

Prepared for



Prepared by

AECOM

Table of Contents

I. INTRODUCTION	I-1	III.2 Forecasted Conditions	III-6
1.1 History	1-1	III.2.1 Volumes & Operations	III-6
1.2 Function	1-1	III.2.2 Alternative Improvements	III-7
1.3 Enhanced Resources for Funding Improvements	1-1	III.2.3 Alternative: Cost	III-12
1.3.1 Hampton Roads Transportation Fund (HRTF) Revenue	1-3	III.2.4 Stakeholder Coordination	III-12
1.3.2 Candidate Projects.....	1-3	III.2.5 Impacts	III-13
1.4 Previous Studies.....	1-3	III.3 Recommendation	III-13
1.5 Study Purpose.....	1-5	IV. I-64/I-264 INTERCHANGE	IV-1
1.6 Study Elements.....	1-5	IV.1 Existing Conditions	IV-1
II. MAINLINE FREEWAY (west of Witchduck Road to Parks Avenue)	II-1	IV.1.1 Geometry, Speeds, Lanes, Traffic Control	IV-1
II.1 Study Methodology	II-1	IV.1.2 Volumes & Operations	IV-1
II.1.1 Traffic Data	II-1	IV.1.3 Crashes	IV-6
II.1.2 Balancing Existing Volumes	II-1	IV.2 Forecasted Conditions	IV-8
II.1.3 Development of Forecasted Year 2040 Average	II-2	IV.2.1 Volumes & Operations	IV-8
Weekday Volumes	II-2	IV.2.2 Alternative Improvements	IV-9
II.1.4 Development of Forecasted Year 2040 Peak Hour	II-3	IV.2.3 Alternative: Cost	IV-17
Volumes	II-3	IV.2.4 Stakeholder Coordination	IV-17
II.2 Analysis Tools	II-3	IV.2.5 Impacts	IV-17
II.2.1 Highway Capacity Manual Software 2010 (HCS)	II-3	IV.3 Recommendation	IV-17
II.2.2 CORSIM 6.3	II-4	V. NEWTOWN ROAD INTERCHANGE	V-1
II.2.3 Synchro 9.0	II-4	V.1 Existing Conditions	V-1
II.2.4 SimTraffic 9	II-4	V.1.1 Geometry, Speeds, Lanes, Traffic Control	V-1
II.3 Analysis of Freeway Segments	II-4	V.1.2 Volumes & Operations	V-1
II.3.1 Existing and Forecasted No Build Alternative	II-4	V.1.3 Crashes	V-4
II.3.2 Improvements to I-264	II-5	V.2 Forecasted Conditions	V-5
(Rosemont Road – Independence Boulevard)	II-5	V.2.1 Volumes & Operations	V-5
II.3.3 Costs	II-5	V.2.2 Alternative Improvements	V-8
II.3.4 Stakeholder Coordination	II-7	V.2.3 Alternative: Cost	V-12
II.3.5 Impacts	II-7	V.2.4 Stakeholder Coordination	V-12
II.3.5 Recommendation	II-7	V.2.5 Impacts	V-12
II.4 Managed Lanes Impact Evaluation	II-7	V.3 Recommendation	V-13
II.4.1 Purpose and Approach.....	II-7	VI. WITCHDUCK ROAD INTERCHANGE	VI-1
II.4.2 Basic Assumptions.....	II-7	VI.1 Existing Conditions	VI-1
II.4.3 Model Results	II-8	VI.1.1 Geometry, Speeds, Lanes, Traffic Control	VI-1
II.4.4 Impacts on Operations.....	II-9	VI.1.2 Volumes & Operations	VI-1
II.4.5 Recommendations	II-9	VI.1.3 Crashes	VI-5
III. MILITARY HIGHWAY INTERCHANGE	III-1	VI.2 Forecasted Conditions	VI-5
III.1 Existing Conditions	III-1	VI.2.1 Volumes & Operations	VI-5
III.1.1 Geometry, Speeds, Lanes, Traffic Control	III-1	VI.2.2 Alternative Improvements	VI-10
III.1.2 Volumes & Operations	III-1	VI.2.3 Alternative: Cost	VI-11
III.1.3 Crashes	III-4	VI.2.4 Stakeholder Coordination	VI-11
		VI.2.5 Impacts	VI-11
		VI.3 Recommendation	VI-11

VII. INDEPENDENCE BOULEVARD INTERCHANGE	VII-1
<i>VII.1 Existing Conditions</i>	VII-1
<i>VII.1.1 Geometry, Speeds, Lanes, Traffic Control</i>	VII-1
<i>VII.1.2 Volumes & Operations</i>	VII-1
<i>VII.1.3 Crashes</i>	VII-6
<i>VII.2 Forecasted Conditions</i>	VII-6
<i>VII.2.1 Volumes & Operations</i>	VII-8
<i>VII.2.2 Alternative Improvements</i>	VII-9
<i>VII.2.3 Alternative: Cost</i>	VII-15
<i>VII.2.4 Stakeholder Coordination</i>	VII-15
<i>VII.2.5 Impacts</i>	VII-16
<i>VII.3 Recommendation</i>	VII-16
VIII. ROSEMONT ROAD INTERCHANGE	VIII-1
<i>VIII.1 Existing Conditions</i>	VIII-1
<i>VIII.1.1 Geometry, Speeds, Lanes, Traffic Control</i>	VIII-1
<i>VIII.1.2 Volumes & Operations</i>	VIII-1
<i>VIII.1.3 Crashes</i>	VIII-6
<i>VIII.2 Forecasted Conditions</i>	VIII-6
<i>VIII.2.1 Volumes & Operations</i>	VIII-6
<i>VIII.2.2 Alternative Improvements</i>	VIII-8
<i>VIII.2.3 Alternative: Cost</i>	VIII-14
<i>VIII.2.4 Stakeholder Coordination</i>	VIII-15
<i>VIII.2.5 Impacts</i>	VIII-15
<i>VIII.3 Recommendation</i>	VIII-15
IX. LYNNHAVEN PARKWAY INTERCHANGE	IX-1
X. LASKIN ROAD INTERCHANGE	X-1
<i>X.1 Existing Conditions</i>	X-1
<i>X.1.1 Geometry, Speeds, Lanes, Traffic Control</i>	X-1
<i>X.1.2 Volumes & Operations</i>	X-1
<i>X.1.3 Crashes</i>	X-4
<i>X.2 Forecasted Conditions</i>	X-4
<i>X.2.1 Volumes & Operations</i>	X-4
<i>X.2.2 Alternative Improvements</i>	X-6
<i>X.2.3 Alternative: Cost</i>	X-6
<i>X.2.4 Stakeholder Coordination</i>	X-6
<i>X.2.5 Recommendation</i>	X-6
XI. FIRST COLONIAL ROAD INTERCHANGE	XI-1
<i>XI.1 Existing Conditions</i>	XI-1
<i>XI.1.1 Geometry, Speeds, Lanes, Traffic Control</i>	XI-1
<i>XI.1.2 Volumes & Operations</i>	XI-1
<i>XI.1.3 Crashes</i>	XI-4
<i>XI.2 Forecasted Conditions</i>	XI-6

<i>XI.2.1 Volumes & Operations</i>	XI-6
<i>XI.2.2 Alternative Improvements</i>	XI-7
<i>XI.2.3 Alternative: Cost</i>	XI-11
<i>XI.2.4 Stakeholder Coordination</i>	XI-11
<i>XI.2.5 Impacts</i>	XI-11
<i>XI.3 Recommendation</i>	XI-11
XII. BIRDNECK ROAD INTERCHANGE	XII-1
<i>XII.1 Existing Conditions</i>	XII-1
<i>XII.1.1 Geometry, Speeds, Lanes, Traffic Control</i>	XII-1
<i>XII.1.2 Volumes & Operations</i>	XII-1
<i>XII.1.3 Crashes</i>	XII-5
<i>XII.2 Forecasted Conditions</i>	XII-5
<i>XII.2.1 Volumes & Operations</i>	XII-5
<i>XII.2.2 Alternative Improvements</i>	XII-8
<i>XII.2.3 Alternative: Cost</i>	XII-11
<i>XII.2.4 Stakeholder Coordination</i>	XII-11
<i>XII.2.5 Impacts</i>	XII-11
<i>XII.3 Recommendation</i>	XII-11
XIII. I-264 & PARKS AVENUE	XIII-1
<i>XIII.1 Existing Conditions</i>	XIII-1
<i>XIII.1.1 Geometry, Speeds, Lanes, Traffic Control</i>	XIII-1
<i>XIII.1.2 Volumes & Operations</i>	XIII-1
<i>XIII.1.3 Crashes</i>	XIII-4
<i>XIII.2 Forecasted Conditions</i>	XIII-6
<i>XIII.2.1 Volumes & Operations</i>	XIII-6
<i>XIII.2.2 Alternative Improvements</i>	XIII-7
<i>XIII.2.3 Alternative: Cost</i>	XIII-9
<i>XIII.2.4 Stakeholder Coordination</i>	XIII-9
<i>XIII.2.5 Impacts</i>	XIII-9
<i>XIII.3 Recommendation</i>	XIII-9
XIV. FINDINGS AND CONCLUSIONS	XIV-1
<i>XIV.1 Freeway</i>	XIV-1
<i>XIV.1.1 West of Rosemont Road</i>	XIV-1
<i>XIV.1.2 East of Rosemont Road</i>	XIV-1
<i>XIV.1.3 Recommendations</i>	XIV-5
<i>XIV.2 Interchanges</i>	XIV-5
<i>XIV.2.1 Military Highway</i>	XIV-5
<i>XIV.2.2 I-64</i>	XIV-5
<i>XIV.2.3 Newtown Road</i>	XIV-6
<i>XIV.2.4 Witchduck Road</i>	XIV-6
<i>XIV.2.5 Independence Boulevard</i>	XIV-6
<i>XIV.2.6 Rosemont Road</i>	XIV-7
<i>XIV.2.7 Lynnhaven Parkway</i>	XIV-7

<i>XIV.2.8 Laskin Road</i>	<i>XIV-7</i>
<i>XIV.2.9 First Colonial Road</i>	<i>XIV-7</i>
<i>XIV.2.10 Birdneck Road</i>	<i>XIV-8</i>
<i>XIV.2.11 Parks Avenue</i>	<i>XIV-8</i>
<i>XIV.3 Conclusions</i>	<i>XIV-8</i>

Electronic Technical Appendix

- Appendix A – Existing Conditions Geometry
- Appendix B – Flood Zones
- Appendix C – Land Use
- Appendix D – Forecast Model Methodology and Balancing
- Appendix E – Graphical Volume Figures – No Build
- Appendix F – Graphical Volume Figures – Build
- Appendix G – CORSIM Graphical Outputs
- Appendix H – Managed Lanes
- Appendix I – Detailed Cost Estimates
- Appendix J – Traffic Counts
- Appendix K – HCS Files
- Appendix L – Synchro Files
- Appendix M – CORSIM Files
- Appendix N – Traffic Count Locations
- Appendix O – Design Notes

List of Tables

Table Number	Page Number
Chapter 2	
2.1 Summary of Existing and Forecast Weekday Daily Volumes: I-264 and I-64	II-3
2.2 Summary of HCS Analysis of 2014 Existing Conditions: I-264 Freeway Segments Level of Service	II-5
2.3 Summary of HCS Analysis and CORSIM Analysis I-264 Freeway Segment: Rosemont Road to Independence Boulevard Year 2040 No Build and Build Alternatives	II-7
2.4 Widening of I-264 between Rosemont Road and Independence Boulevard Impacts.....	II-7
2.5 Summary of Managed Lanes Analysis I-264 Freeway East of I-64 Year 2040 No Build and Build Alternatives	II-9
2.6 Summary of HCS Analysis of I-264: Rosemont to Newtown HOV and Managed Lanes Restriction Scenarios.....	II-9
Chapter 3	
3.1 Summary of 2014 Existing Conditions HCS Capacity Analysis I-264 & Military Highway Interchange.....	III-1
3.2 Summary of 2014 Existing Conditions CORSIM Capacity Analysis I-264 & Military Highway Interchange.....	III-4
3.3 Summary of Crash History at I-264 & Military Highway 2009-2012.....	III-4
3.4 Forecasted Conditions Volumes for Build Alternatives I-264 & Military Highway Interchange.....	III-6
3.5 Summary of Capacity Analysis Results Year 2040 Alternatives: Military Highway & I-264	III-11
3.6 Summary of 2040 Build SimTraffic Capacity Analysis: I-264 at Military Highway Improvement Alternatives.....	III-12
3.7 Summary of 2040 Build SimTraffic Queue Analysis: I-264 at Military Highway Improvement Alternatives.....	III-12
3.8 Military Highway Interchange Improvement Alternative Impacts.....	III-13
Chapter 4	
4.1 Summary of 2014 Existing Conditions HCS Capacity Analysis I-264 & I-64 Interchange.....	IV-4
4.2 Summary of 2014 Existing Conditions CORSIM Capacity Analysis I-264 & I-64 Interchange.....	IV-5
4.3 Summary of Crash History at I-264 & I-64 2009-2012.....	IV-6
4.4 Forecasted Conditions Volumes for Build Alternatives I-264 & I-64 Interchange.....	IV-8

4.5 Summary of HCS Capacity Analysis Results Year 2040 Alternatives: I-264 & I-64 Interchange	IV-15
4.6 Summary of CORSIM Capacity Analysis Results Year 2040 Alternatives: I-264 & I-64 Interchange	IV-16
4.7 I-264 & I-64 Interchange Improvement Alternative Impacts	IV-17
4.8 Summary of HCS Analysis and CORSIM Analysis I-64 Freeway Segment: North and South of I-264 Interchange Year 2040 No Build and Build Alternatives.....	IV-18

Chapter 5

5.1 Summary of 2014 Existing Conditions HCS Capacity Analysis I-264 & Newtown Road Interchange	V-1
5.2 Summary of 2014 Existing Conditions CORSIM Capacity Analysis I-264 & Newtown Road Interchange	V-4
5.3 Summary of 2014 Existing Conditions SimTraffic Capacity Analysis Newtown Road Corridor	V-4
5.4 Summary of 2014 Existing Conditions SimTraffic Queue Analysis I-264 at Newtown Road	V-4
5.5 Summary of Crash History at I-264 & Newtown Road 2009-2012	V-5
5.6 Forecasted Conditions Volumes for Build Alternatives Newtown Road Interchange.....	V-7
5.7 Summary of 2040 No Build Conditions SimTraffic Capacity Analysis Newtown Road Corridor	V-7
5.8 Summary of 2040 No Build Conditions SimTraffic Queue Analysis I-264 at Newtown Road	V-7
5.9 Summary of Capacity Analysis Results Year 2040 Alternatives: Newtown Road & I-264.....	V-9
5.10 Summary of 2040 Build Alternatives SimTraffic Capacity Analysis Newtown Road Corridor	V-12
5.11 Summary of 2040 Build Alternatives SimTraffic Queue Analysis I-264 at Newtown Road Improvement Alternatives.....	V-12
5.12 Newtown Road Interchange Improvement Alternative Impacts	V-12

Chapter 6

6.1 Summary of 2014 Existing Conditions HCS Capacity Analysis I-264 & Witchduck Road Interchange.....	VI-1
6.2 Summary of 2014 Existing Conditions CORSIM Capacity Analysis I-264 & Witchduck Road Interchange.....	VI-4
6.3 Summary of 2014 Existing Conditions SimTraffic Capacity Analysis Witchduck Road Corridor	VI-4
6.4 Summary of 2014 Existing Conditions SimTraffic Queue Analysis I-264 at Witchduck Road.....	VI-4
6.5 Summary of Crash History at I-264 & Witchduck Road 2009-2012.....	VI-5
6.6 Forecasted Conditions Volumes for Build Alternatives Witchduck Road Interchange	VI-7
6.7 Summary of 2040 No Build Conditions SimTraffic Capacity Analysis	

Witchduck Road Corridor	VI-7
6.8 Summary of 2040 No Build Conditions SimTraffic Queue Analysis I-264 at Witchduck Road	VI-7
6.9 Summary of Capacity Analysis Results Year 2040 Alternatives: Witchduck Road & I-264	VI-9
6.10 Summary of 2040 Build SimTraffic Capacity Analysis I-264 at Witchduck Road Improvement Alternatives	VI-10
6.11 Summary of 2040 Build Alternatives SimTraffic Queue Analysis I-264 at Witchduck Road Improvement Alternatives	VI-10
6.12 Witchduck Road Interchange Improvement Alternative Impacts	VI-11
Chapter 7	
7.1 Summary of 2014 Existing Conditions HCS Capacity Analysis I-264 & Independence Boulevard Interchange	VII-1
7.2 Summary of 2014 Existing Conditions CORSIM Capacity Analysis I-264 & Independence Boulevard Interchange	VII-5
7.3 Summary of 2014 Existing Conditions SimTraffic Capacity Analysis Independence Boulevard Corridor	VII-5
7.4 Summary of 2014 Existing Conditions SimTraffic Queue Analysis I-264 at Independence Boulevard	VII-5
7.5 Summary of Crash History at I-264 & Independence Boulevard 2009-2012	VII-6
7.6 Forecasted Conditions Volumes for Build Alternatives Independence Boulevard Interchange	VII-6
7.7 Summary of 2040 No Build Conditions SimTraffic Capacity Analysis Independence Boulevard Corridor	VII-8
7.8 Summary of 2040 No Build Conditions SimTraffic Queue Analysis I-264 at Independence Boulevard	VII-8
7.9 Summary of Capacity Analysis Results Year 2040 Alternatives: Independence Boulevard & I-264	VII-14
7.10 Summary of 2040 Build SimTraffic Capacity Analysis I-264 at Independence Boulevard Improvement Alternatives	VII-15
7.11 Summary of 2040 Build SimTraffic Queue Analysis I-264 at Independence Boulevard Improvement Alternatives	VII-15
7.12 Independence Boulevard Interchange Improvement Alternative Impacts	VII-15
Chapter 8	
8.1 Summary of 2014 Existing Conditions HCS Capacity Analysis I-264 & Rosemont Road Interchange	VIII-1
8.2 Summary of 2014 Existing Conditions CORSIM Capacity Analysis I-264 & Rosemont Road Interchange	VIII-5
8.3 Summary of 2014 Existing Conditions SimTraffic Capacity Analysis Rosemont Road Corridor	VIII-5
8.4 Summary of 2014 Existing Conditions SimTraffic Queue Analysis I-264 at Rosemont Road	VIII-5
8.5 Summary of Crash History at I-264 & Rosemont Road 2009-2012	VIII-6
8.6 Forecasted Conditions Volumes for Build Alternatives	

Rosemont Road Interchange	VIII-6
8.7 Summary of 2040 No Build Conditions SimTraffic Capacity Analysis Rosemont Road Corridor	VIII-8
8.8 Summary of 2040 No Build Conditions SimTraffic Queue Analysis I-264 at Rosemont Road	VIII-8
8.9 Summary of Capacity Analysis Results Year 2040 Alternatives: Rosemont Road & I-264	VIII-13
8.10 Summary of 2040 Build SimTraffic Capacity Analysis I-264 at Rosemont Road Improvement Alternatives	VIII-14
8.11 Summary of 2040 Build SimTraffic Queue Analysis I-264 at Rosemont Road Improvement Alternatives	VIII-14
8.12 Rosemont Road Interchange Improvement Alternative Impacts	VIII-15

Chapter 10

10.1 Summary of 2014 Existing Conditions HCS Capacity Analysis I-264 & Laskin Road Interchange	X-1
10.2 Summary of Crash History at I-264 & Laskin Road 2009-2012	X-4
10.3 Forecasted Conditions Volumes for Build Alternatives Laskin Road Interchange	X-4
10.4 Summary of HCS Capacity Analysis Results Year 2040 Alternatives: Laskin Road & I-264	X-6

Chapter 11

11.1 Summary of 2014 Existing Conditions HCS Capacity Analysis I-264 & First Colonial Road Interchange	XI-1
11.2 Summary of 2014 Existing Conditions SimTraffic Capacity Analysis First Colonial Road Corridor	XI-4
11.3 Summary of 2014 Existing Conditions SimTraffic Queue Analysis I-264 at First Colonial	XI-4
11.4 Summary of Crash History at I-264 & First Colonial Road 2009-2012	XI-4
11.5 Forecasted Conditions Volumes for Build Alternatives First Colonial Road Interchange	XI-6
11.6 Summary of 2040 No Build Conditions SimTraffic Capacity Analysis Rosemont Road Corridor	XI-6
11.7 Summary of 2040 No Build Conditions SimTraffic Queue Analysis I-264 at First Colonial Road	XI-7
11.8 Summary of Capacity Analysis Results Year 2040 Alternatives: First Colonial Road & I-264	XI-10
11.9 Summary of 2040 Build SimTraffic Capacity Analysis I-264 at First Colonial Road Improvement Alternatives	XI-11
11.10 Summary of 2040 Build SimTraffic Queue Analysis I-264 at First Colonial Road Improvement Alternatives	XI-11
11.11 First Colonial Road Interchange Improvement Alternative Impacts	XI-11

Chapter 12

12.1 Summary of 2014 Existing Conditions HCS Capacity Analysis I-264 & Birdneck Road Interchange.....XII-1

12.2 Summary of 2014 Existing Conditions CORSIM Capacity Analysis I-264 & Birdneck Road Interchange.....XII-4

12.3 Summary of 2014 Existing Conditions SimTraffic Capacity Analysis Birdneck Road Corridor.....XII-4

12.4 Summary of 2014 Existing Conditions SimTraffic Queue Analysis I-264 at Birdneck Road.....XII-4

12.5 Summary of Crash History at I-264 & Birdneck Road 2009-2012.....XII-5

12.6 Forecasted Conditions Volumes for Build Alternatives Birdneck Road Interchange.....XII-7

12.7 Summary of 2040 No Build Conditions SimTraffic Capacity Analysis Birdneck Road Corridor.....XII-7

12.8 Summary of 2040 No Build Conditions SimTraffic Queue Analysis I-264 at Birdneck Road.....XII-7

12.9 Summary of 2040 Build SimTraffic Capacity Analysis I-264 at Birdneck Road Improvement Alternatives.....XII-8

12.10 Summary of 2040 Build SimTraffic Queue Analysis I-264 at Birdneck Road Improvement Alternatives.....XII-8

12.11 Summary of Capacity Analysis Results Year 2040 Alternatives: Birdneck Road & I-264.....XII-10

12.12 Birdneck Road Interchange Improvement Alternative Impacts.....XII-11

Chapter 13

13.1 Summary of 2014 Existing Conditions HCS Capacity Analysis I-264 & Parks Avenue.....XIII-1

13.2 Summary of 2014 Existing Conditions SimTraffic Capacity Analysis I-264 at Parks Avenue.....XIII-4

13.3 Summary of 2014 Existing Conditions SimTraffic Queue Analysis I-264 at Parks Avenue.....XIII-4

13.4 Summary of Crash History at I-264 & Parks Avenue 2009-2012.....XIII-4

13.5 Forecasted Conditions Volumes for Build Alternatives I-264 at Parks Avenue.....XIII-6

13.6 Summary of 2040 No Build Conditions SimTraffic Capacity Analysis I-264 at Parks Avenue.....XIII-6

13.7 Summary of 2040 No Build Conditions SimTraffic Queue Analysis I-264 at Parks Avenue.....XIII-6

13.8 Summary of HCS Capacity Analysis Results Year 2040 Alternatives: Parks Avenue & I-264.....XIII-7

13.9 Summary of 2040 Build SimTraffic Capacity Analysis I-264 at Parks Avenue Improvement Alternatives.....XIII-7

13.10 Summary of 2040 Build SimTraffic Queue Analysis I-264 at Parks Avenue Improvement Alternatives.....XIII-7

13.11 Parks Avenue Interchange Improvement Alternative Impacts.....XIII-9

Chapter 14

14.1 Summary of Preferred Alternatives and Estimated Costs.....XIV-8

List of Figures

Figure Number	Page Number
Chapter 1	
I.1 I-264 Corridor Evaluation Study Area	I-2
I.2 I-64/I-264 HOV Feasibility Study Recommendations	I-4
Chapter 2	
II.1 2040 Build Alternative I-264 from Independence Blvd to Rosemont Rd	II-6
II.2 Hampton Roads 2034 Managed Lane System	II-8
Chapter 3	
III.1 Existing Geometry I-264 & Military Hwy Interchange	III-2
III.2 Peak Hour Volumes I-264 & Military Hwy Interchange	III-3
III.3 Crash Type Map I-264 & Military Hwy Interchange	III-5
III.4 2040 Build Alternative I-264 & Military Hwy Interchange Diverging Diamond	III-8
III.5 2040 Build Alternative I-264 & Military Hwy Interchange Modified Partial Cloverleaf	III-9
III.6 2040 Build Preferred Alternative I-264 & Military Hwy Interchange Partial Cloverleaf	III-10
Chapter 4	
IV.1 Existing Geometry I-64 & I-264 Interchange	IV-2
IV.2 Peak Hour Volumes I-64 & I-264 Interchange.....	IV-3
IV.3 Crash Type Map I-64 & I-264 Interchange	IV-7
IV.4 2040 Build Alternative I-64 & I-264 Interchange Directional.....	IV-10
IV.5 2040 Build Alternative I-64 & I-264 Interchange Semidirectional	IV-11
IV.6 2040 Build Preferred Alternative I-64 & I-264 Interchange Modified Conventional	IV-12
IV.7 2040 Build Alternative I-64 & I-264 Interchange I-264EB Acceleration Lanes.....	IV-13
IV.8 Part-time Shoulder Use Traffic Control on Westbound I-264, Virginia Beach	IV-19
Chapter 5	
V.1 Existing Geometry I-264 & Newtown Road Interchange	V-2
V.2 Peak Hour Volumes I-264 & Newtown Road Interchange	V-3
V.3 Crash Type Map I-264 & Newtown Road Interchange	V-6
V.4 2040 Build Alternative I-264 & Newtown Road Interchange Folded Diamond.....	V-10
V.5 2040 Build Preferred Alternative I-264 & Newtown Road Interchange Modified Folded Diamond	V-11

Chapter 6

VI.1 Existing Geometry I-264 & Witchduck Road Interchange	VI-2
VI.2 Peak Hour Volumes I-264 & Witchduck Road Interchange.....	VI-3
VI.3 Crash Type Map I-264 & Witchduck Road Interchange.....	VI-6
VI.4 2040 Build Preferred Alternative I-264 & Witchduck Road Interchange Folded Diamond	VI-8

Chapter 7

VII.1 Existing Geometry I-264 & Independence Boulevard Interchange	VII-2
VII.1A Existing Geometry I-264 from Independence Boulevard Interchange to Rosemont Road	VII-3
VII.2 Peak Hour Volumes I-264 & Independence Boulevard Interchange	VII-4
VII.3 Crash Type Map I-264 & Independence Boulevard Interchange	VII-7
VII.4 2040 Build Alternative I-264 & Independence Boulevard Interchange Partial Clover w/ Directional Ramp.....	VII-11
VII.5 2040 Build Preferred Alternative I-264 & Independence Boulevard Interchange Partial Clover w/ Braided Directional Ramp.....	VII-12
VII.6 2040 Build Alternative I-264 & Independence Boulevard Interchange Modified Partial Clover w/ Directional Ramp.....	VII-13

Chapter 8

VIII.1 Existing Geometry I-264 & Rosemont Road Interchange	VIII-2
VIII.1A Existing Geometry I-264 from Rosemont Road to Lynnhaven Pkwy.....	VIII-3
VIII.2 Peak Hour Volumes I-264 & Rosemont Road Interchange.....	VIII-4
VIII.3 Crash Type Map I-264 & Rosemont Road Interchange.....	VIII-7
VIII.4 2040 Build Alternative I-264 & Rosemont Road Interchange Split Folded Diamond	VIII-9
VIII.5 2040 Build Alternative I-264 & Rosemont Road Interchange Offset Single Point Urban Diamond.....	VIII-10
VIII.6 2040 Build Preferred Alternative I-264 & Rosemont Road Interchange Tight Diverging Diamond	VIII-11

Chapter 9

IX.1 Existing Geometry I-264 & Lynnhaven Pkwy Interchange, I-264 & London Bridge Rd Interchange	IX-2
IX.2 2040 Build Alternative I-264 & Lynnhaven Pkwy Interchange	IX-3

Chapter 10

X.1 Existing Geometry I-264 & Laskin Road Interchange	X-2
X.2 Peak Hour Volumes I-264 & Laskin Road Interchange	X-3
X.3 Crash Type Map I-264 & Laskin Road Interchange	X-5
X.4 2040 Build Alternative I-264 & Laskin Road Interchange.....	X-7

Chapter 11

XI.1 Existing Geometry I-264 & First Colonial Road Interchange XI-2
XI.2 Peak Hour Volumes I-264 & First Colonial Road Interchange..... XI-3
XI.3 Crash Type Map I-264 & First Colonial Road Interchange XI-5
XI.4 2040 Build Preferred Alternative I-264 & First Colonial Road Interchange
 Single Point Urban Interchange..... XI-8
XI.5 2040 Build Alternative I-264 & First Colonial Road Interchange
 Tight Diamond..... XI-9

Chapter 12

XII.1 Existing Geometry I-264 & Birdneck Road InterchangeXII-2
XII.2 Peak Hour Volumes I-264 & Birdneck Road InterchangeXII-3
XII.3 Crash Type Map I-264 & Birdneck Road InterchangeXII-6
XII.4 2040 Build Preferred Alternative I-264 & Birdneck Road InterchangeXII-9

Chapter 13

XIII.1 Existing Geometry I-264 & Parks AvenueXIII-2
XIII.2 Peak Hour Volumes I-264 & Parks AvenueXIII-3
XIII.3 Crash Type Map I-264 & Parks AvenueXIII-5
XIII.4 2040 Build Alternative I-264 & Parks Avenue
 (Existing Geometry – No Improvements) XIII-8

Chapter 14

XIV.1 Programmed Improvements to Eastbound I-264: I-64 to Witchduck Road .. XIV-2
XIV.2 I-264 Recommended 2040 Lanes XIV-3
XIV.3 I-264 Recommended 2040 Lanes XIV-4